

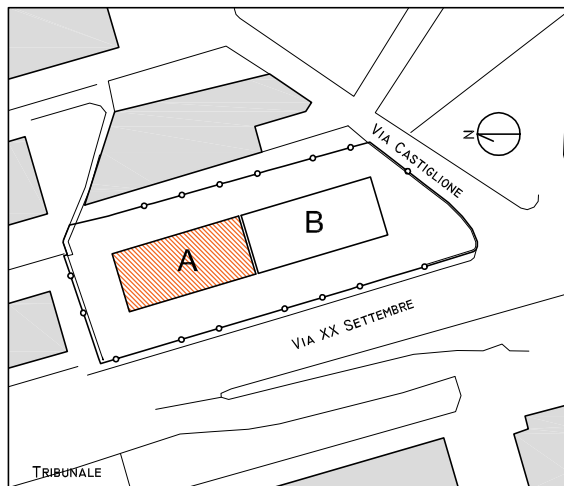
# EDIFICIO VIA XX SETTEMBRE - L'AQUILA (AQ)

31/10/2016

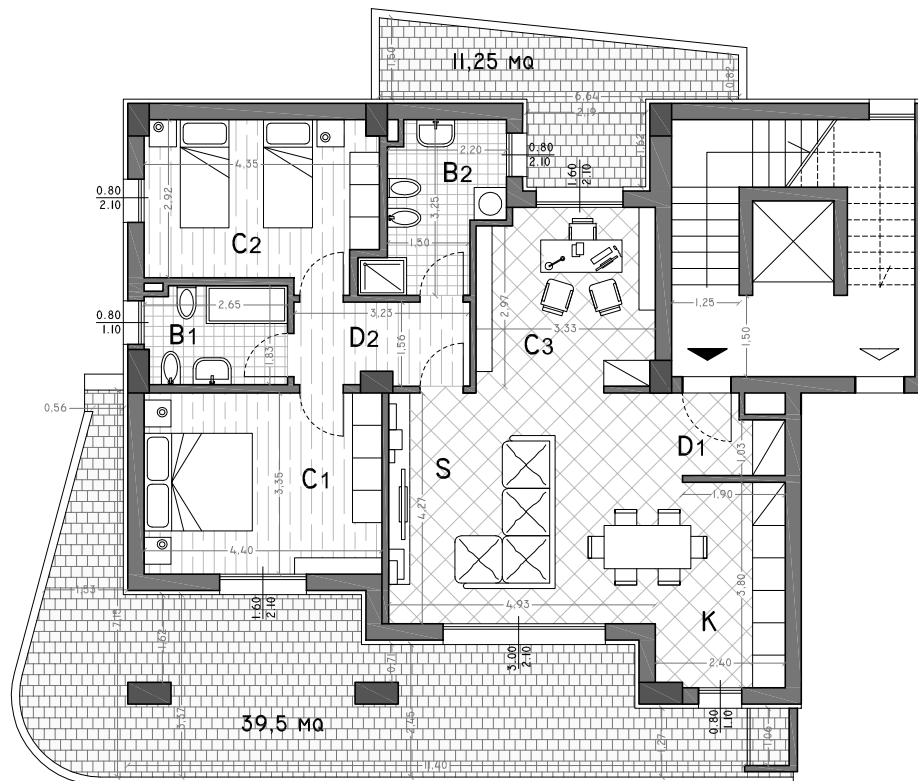


C.so Garibaldi, 71  
66050 San Salvo (CH)  
Tel: 0873.3244200  
mail: info@streverspa.it

## INQUADRAMENTO



## RESIDENZA TIPOLOGIA R.3.15



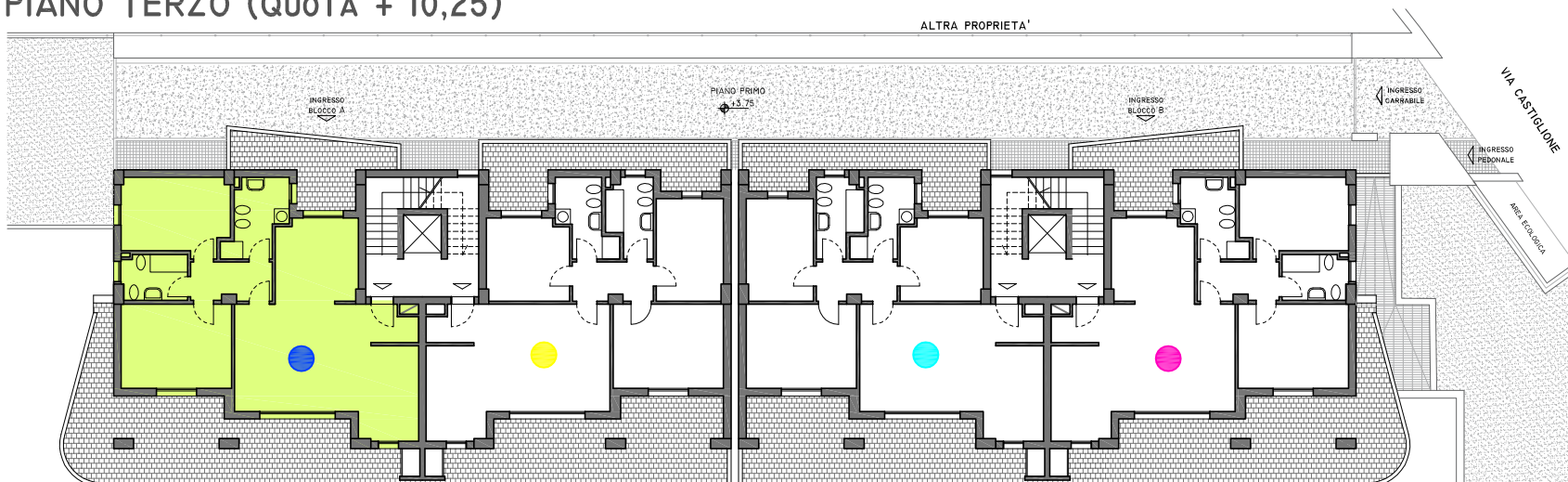
K	CUCINA	30,7 MQ
S	SOGGIORNO	
C1	CAMERA	14,86 MQ
C2	CAMERA	12,63 MQ
C3	CAMERA	11 MQ
B1	BAGNO	4,8 MQ
B2	BAGNO	6,54 MQ
D1	DISIMPEGNO	2,8 MQ
D2	DISIMPEGNO	4,87 MQ

### PIANO SECONDO (R.2.15)

SUP. UTILE: 88,2 MQ  
SUP. LORDA: 104,64 MQ  
SUP. TERRAZZI: 50,75 MQ

Prezzo di vendita:

## PIANO TERZO (QUOTA + 10,25)



### RESIDENZE

- TIPOLOGIA (R.3.15)
- TIPOLOGIA (R.3.16)
- TIPOLOGIA (R.3.17)
- TIPOLOGIA (R.3.18)