

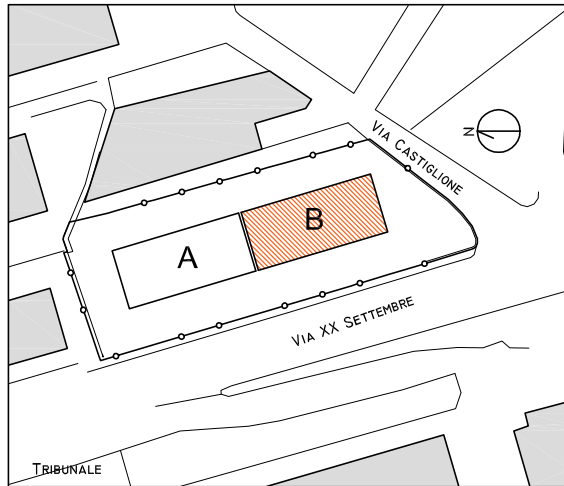
EDIFICIO VIA XX SETTEMBRE - L'AQUILA (AQ)

31/10/2016

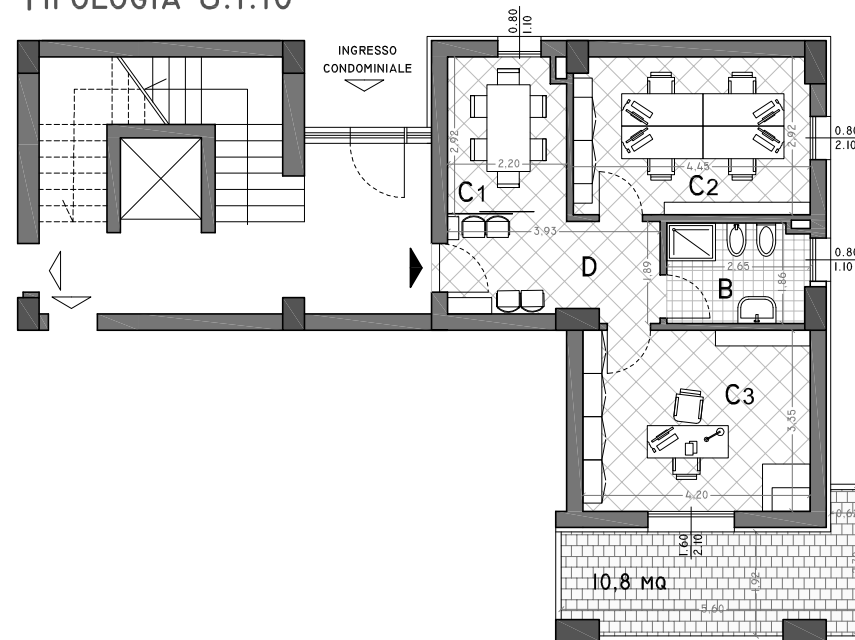


C.so Garibaldi, 71
66050 San Salvo (CH)
Tel: 0873.3244200
mail: info@stroverspa.it

INQUADRAMENTO



UFFICIO TIPOLOGIA U.I.10



C1	CAMERA	6,53 MQ
C2	CAMERA	12,75 MQ
C3	CAMERA	14,16 MQ
B	BAGNO	4,87 MQ
D	DISIMPEGNO	6,84 MQ

PIANO PRIMO (U.I.10)

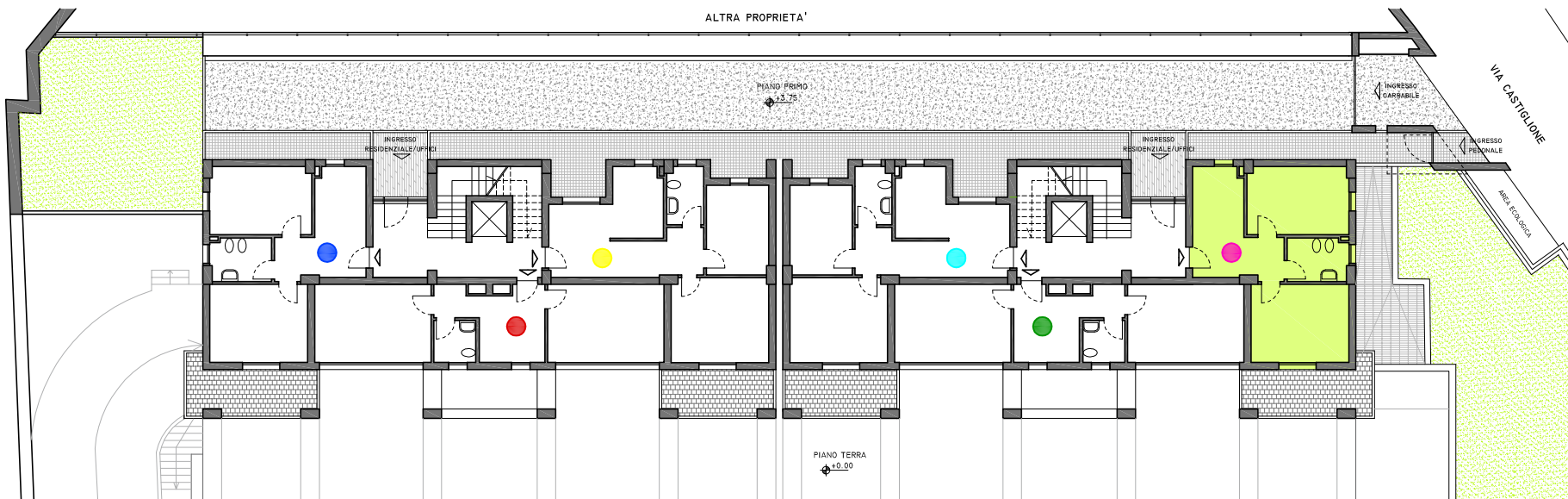
SUP. UTILE: 45,15 MQ

SUP. LORDA: 55 MQ

SUP. TERRAZZI: 10,8 MQ

Prezzo di vendita:

PIANO PRIMO (QUOTA + 3,95)



UFFICI

- TIPOLOGIA (U.I.5)
- TIPOLOGIA (U.I.6)
- TIPOLOGIA (U.I.7)
- TIPOLOGIA (U.I.8)
- TIPOLOGIA (U.I.9)
- TIPOLOGIA (U.I.10)