

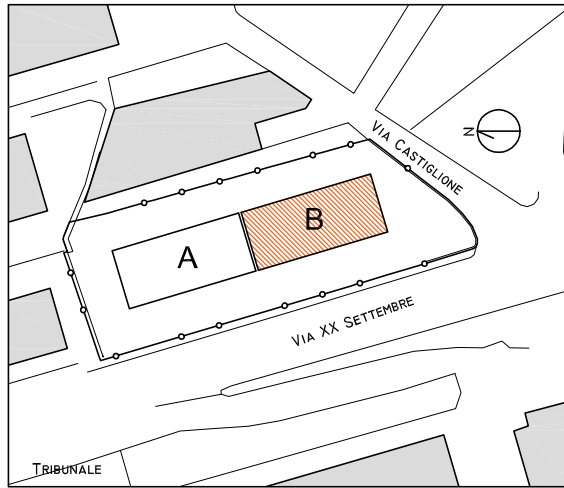
# EDIFICIO VIA XX SETTEMBRE - L'AQUILA (AQ)

31/10/2016

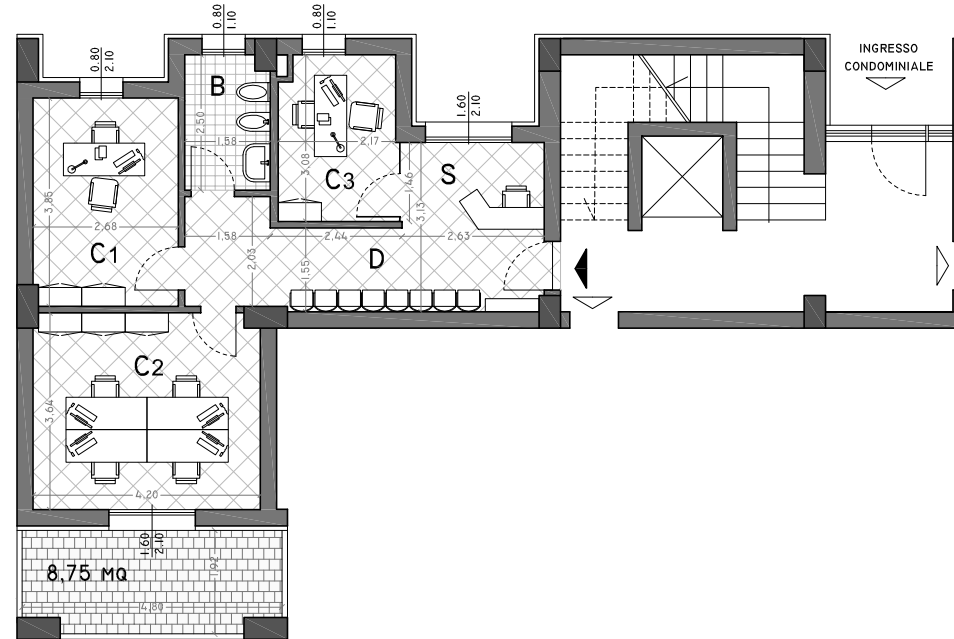


C.so Garibaldi, 71  
66050 San Salvo (CH)  
Tel: 0873.3244200  
mail: info@streverspa.it

## INQUADRAMENTO



## UFFICIO TIPOLOGIA U.I.8



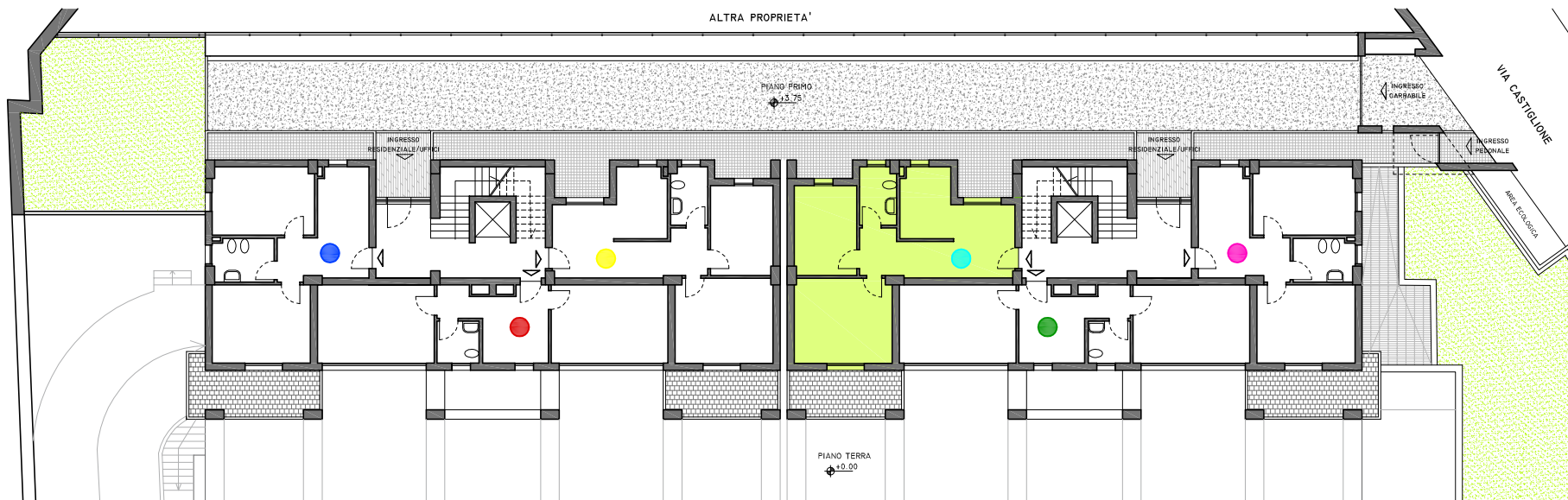
C1	CAMERA	10,38 MQ
C2	CAMERA	15,25 MQ
C3	CAMERA	6,55 MQ
B	BAGNO	3,95 MQ
S	SEGRETERIA	4,33 MQ
D	DISIMPEGNO	11,14 MQ

### PIANO PRIMO (U.I.8)

SUP. UTILE: 51,6 MQ  
SUP. LORDA: 63 MQ  
SUP. TERRAZZI: 8,75 MQ

Prezzo di vendita:

## PIANO PRIMO (QUOTA + 3,95)



### UFFICI

- TIPOLOGIA (U.I.5)
- TIPOLOGIA (U.I.6)
- TIPOLOGIA (U.I.7)
- TIPOLOGIA (U.I.8)
- TIPOLOGIA (U.I.9)
- TIPOLOGIA (U.I.10)