

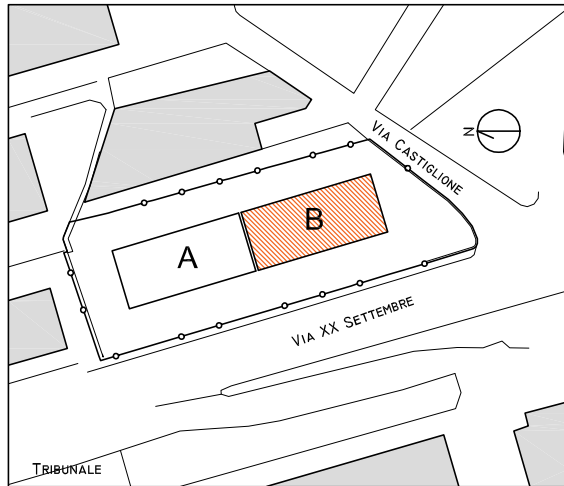
EDIFICIO VIA XX SETTEMBRE - L'AQUILA (AQ)

31/10/2016

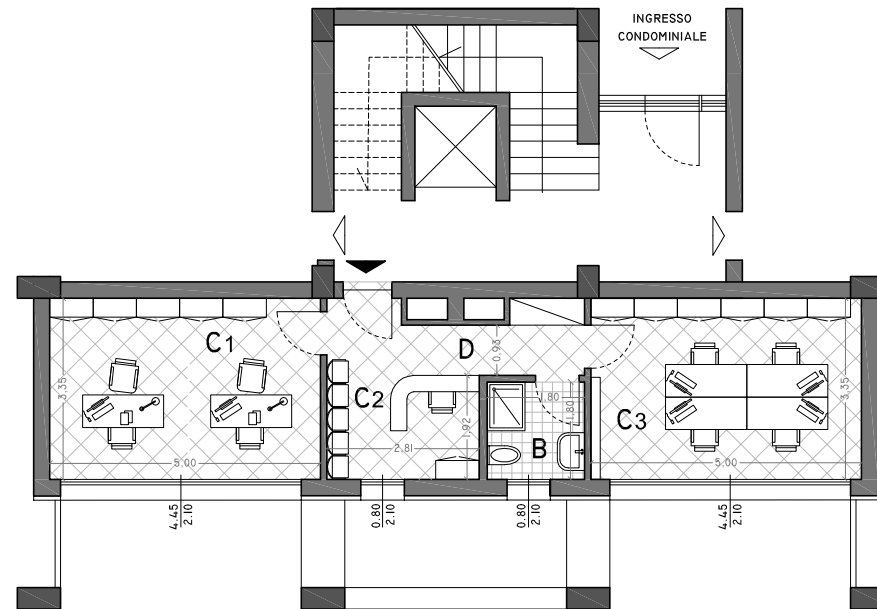


C.so Garibaldi, 71
66050 San Salvo (CH)
Tel: 0873.3244200
mail: info@stroverspa.it

INQUADRAMENTO



UFFICIO TIPOLOGIA U.I.9



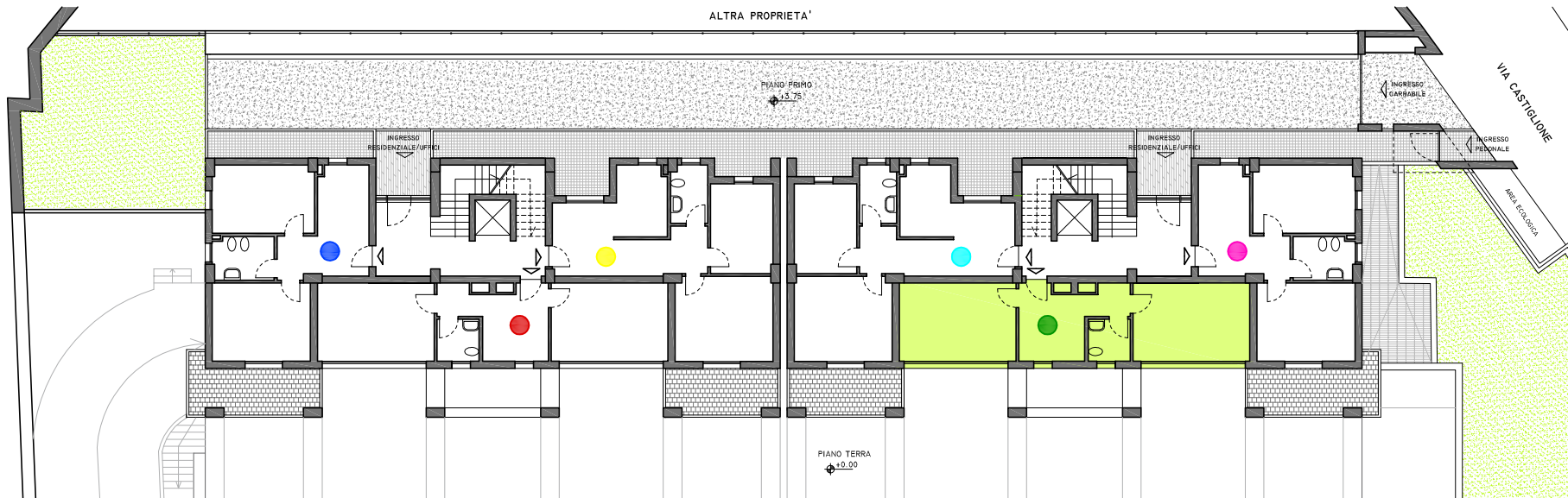
C1	CAMERA	16,84 MQ
C2	CAMERA	5,4 MQ
C3	CAMERA	16,85 MQ
B	BAGNO	3,33 MQ
D	DISIMPEGNO	5,94 MQ

PIANO PRIMO (U.I.9)

SUP. UTILE: 48,36 MQ
SUP. LORDA: 58,2 MQ

Prezzo di vendita:

PIANO PRIMO (QUOTA + 3,95)



- UFFICI**
- TIPOLOGIA (U.I.5)
 - TIPOLOGIA (U.I.6)
 - TIPOLOGIA (U.I.7)
 - TIPOLOGIA (U.I.8)
 - TIPOLOGIA (U.I.9)
 - TIPOLOGIA (U.I.10)